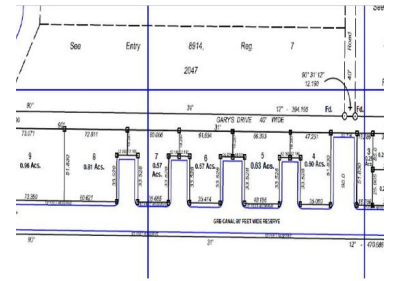


**\$75,000USD**



## L1133 - Commercial/ Boating/ Residential opportunity

Location: Airport Road - Placencia - Stann Creek

Land Area: 10890 | Frontage: Water-Front

Placencia Harbour Docks is an exciting development directly behind the airport. It makes great use of its proximity to town and the airport. All lots are on a very wide 90 foot canal that feeds off the lagoon a few minutes from the open ocean. Great if you are an Island owner just needing a small base in town to store goods, have sleep over facilities for early morning connections to the airport or out to the reef and islands. Placencia is growing at an alarming rate and these mixed use lots are few and far between. 9 of the 10 lots have boat moorage. Lot sizes vary from 0.25 to 0.96 Prices are Lot 1 \$75,000 or \$95,000 with SMALL house Lot 2 \$95,000 SOLD Lot 3 \$110,000 SOLD Lot 4 \$220,00 Lot 6 \$250,000 SOLD Lot 7 \$250,000 Lot 8 \$400,000 Lot 9 \$525,000 Talk to Theresa



Agent: Theresa Prinsloo  
E-Mail: [theresa@1stchoicebelize.com](mailto:theresa@1stchoicebelize.com)  
Mobile: 501-629-7332  
Phone: 501 629 7332



RE/MAX 1st Choice  
Main Road  
Placencia & Hopkins Village  
Stann Creek, Belize Central America