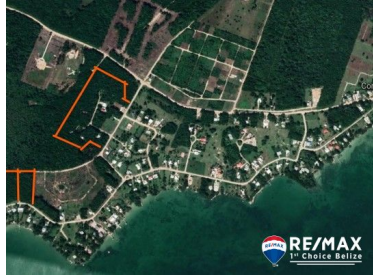


L4083 - 2 Commercial lots at Consejo Shore

Location: Corozal Town - Corozal

Land Area: 121968 | Frontage: Road-Front

Commercial Lots in Consejo Shores Community - could be precisely what you need to start, grow or nurture your business. These properties are located at the northern part Belize. Approximately 30 minutes by car to bordering Chetumal, Mexico. Access to Playa del Carmen and Cancun through Pan American Highway, across the Belize/Mexico border where American style shopping malls welcome you. These 2 lots are designated for commercial use. Both parcels have 228 Main road frontage, the lots are 2.80 acres 2.30 acres respectively with a secondary road running between them for easy access. Perfect for a small resort or any other type of business you choose to start. A wise man once said, "I don't love property, God's not making any more." Do you have the vision for what's coming? Talk to Theresa for more information.



Agent: Theresa Prinsloo
 E-Mail: theresa@1stchoicebelize.com
 Mobile: 501-629-7332
 Phone: 501 629 7332



RE/MAX 1st Choice
 Main Road
 Placencia & Hopkins Village
 Stann Creek, Belize Central America