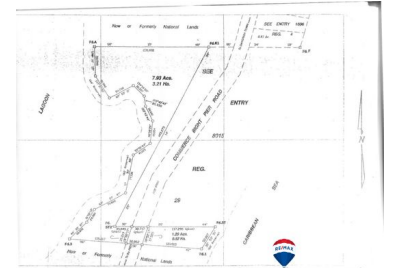
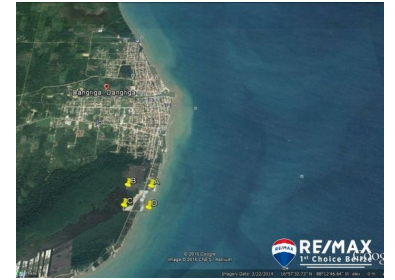


\$1,850,000USD



L3106 - 24.25 Acres - 1465ft Beachfront Commerce Bight

Location: Stann Creek

Land Area: 1056330 | Frontage: Beach-Front

â .BEACCHFRONT & LAGOON FRONT DEVELOPMENT TRACTâ . The 24.25 acres beachfront property boasts of having about 1465 feet of Pure Golden Sand on an Emerald sea. The Property is Filled, Levelled and ready to start. All that is needed are your Dream Plans. Ample Supply of Water and Power runs through the Property, and it is located right at the Southern Edge of Town With another 1000 feet of Lagoon frontage for Marina Development and secure moorage. Water and Power at the property line. This Large Development beachfront tract is located just South of Dangriga town with a population of approximately 8,000 people. The downtown core is located at about a 5 minute drive from the Property. In Dangriga, you will find all the amenities (within a 5 to 10 minute drive) that you will require to support such a Gated or Non-Gated Villa/Condo type of development. In Dangriga, you will find a good Hospital, an Airport that can get you to the International Airport in Belize City with 30 minute, a series of Banks, Post Office, Government Offices, Markets, Grocery Stores, Highway Connection, Dental & Medical clinics (so inexpensive), Police and Fire Protection, Filled with Friendly Garifuna Belizean... contact agent for more info.



Agent: David Kafka
E-Mail: david@1stchoicebelize.com
Mobile: +(501) 615-7653
Phone: +(501) 523-3666



RE/MAX 1st Choice
Main Road
Placencia & Hopkins Village
Stann Creek, Belize Central America