

\$550,000USD



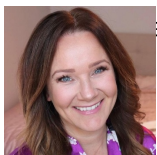
H2415 - Private 1.190 acres Beautifully Landscaped Oasis in Gated Community

Location: Sittee River Reserve, Equestrian Phase 1 - Sittee River - Placencia Village - Stann Creek

Beds: 2 | Baths: 1 | Living Area: 1240 | Land Area: 51836 | Frontage: Road-Front



This Private 2-bedroom 2 bath with a bonus casita universal space has it all. With 1240 square feet of living space plus a private outdoor patio with a nice deep pool. This home is located on a 1.190 lot in the Reserve. Located in the equestrian area where all the lots are nice big parcels. This cement built home Has an open Concept main living space with Vaulted ceilings. The Kitchen cabinets are custom Belize hardwoods. With a large Island and beautiful granite counter tops. Complete with a whole house generator. The Landscaping is a gardeners Dream there is a green house for you to do additional garden areas, you have walking paths leading to a swing fire pit are where a good smore has been known to be had. This property has a nice, relaxed feeling about it. The additional casita can be a 3-rd. bedroom. A music room, craft room or extra storage. The pool room is where you will find all the pumps for the pool. Storage for the pool supplies and the Laundry. On the pool deck there is a spacious BBQ area and plenty of tiled Deck to entertain. Give Kim a call 501-608-0208 to view this 1.190 acres thatâ€™s beautifully landscaped with a circular driveway and fruit trees including fruit...



Agent: Kimberley Astren
E-Mail: kim@1stchoicebelize.com
Mobile: +501-608-0208
Phone: 1-832-430-7500



RE/MAX 1st Choice
Main Road
Placencia & Hopkins Village
Stann Creek, Belize Central America